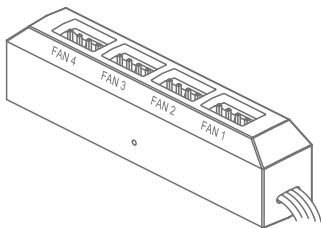
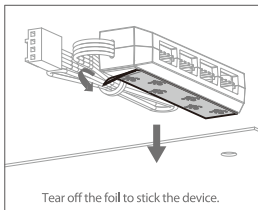


This installation guide is applicable for FAN HUB series.



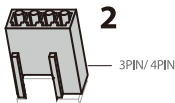
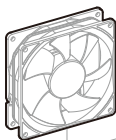
PRODUCT SCHEMATIC DRAWING

How to Use

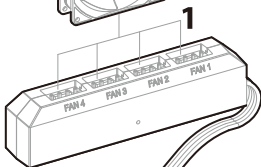


Tear off the foil to stick the device.

This fan hub supports up to 4 fans, PWM function compatible.
 Note: The data of FAN1 can be obtained by BIOS or other software, PWM function is not available when 3-Pin port is applied.



3PIN/4PIN



- 
- EN For more information, please check our website at: www.deepcool.com
- DE Für weitere Informationen besuchen Sie bitte unsere Website unter: www.deepcool.com
- FR Pour plus d'informations, merci de visiter notre site internet: www.deepcool.com
- ES Para más información, por favor, visite nuestra página en: www.deepcool.com
- IT Per ulteriori informazioni, visitate il nostro sito web: www.deepcool.com
- PT Para mais informação, visita o nosso website em: www.deepcool.com
- CS Další informace najdete na našich webových stránkách: www.deepcool.com
- SV För mer information, gå till vår hemsida på: www.deepcool.com
- PL Więcej informacji można znaleźć na naszej stronie internetowej: www.deepcool.com
- RU Больше информации на сайте: www.deepcool.com
- JA 詳細については、以下URL先の公式WEBサイトをご確認ください: www.deepcool.com
- KO 자세한 내용은 www.deepcool.com 에서 확인하실 수 있습니다
- AR على الموقع الإلكتروني ، تاملوا من ذي زملل www.deepcool.com
- ZH 如需要更多信息，请浏览网站: www.deepcool.com