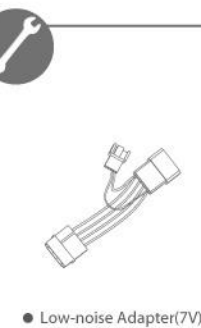
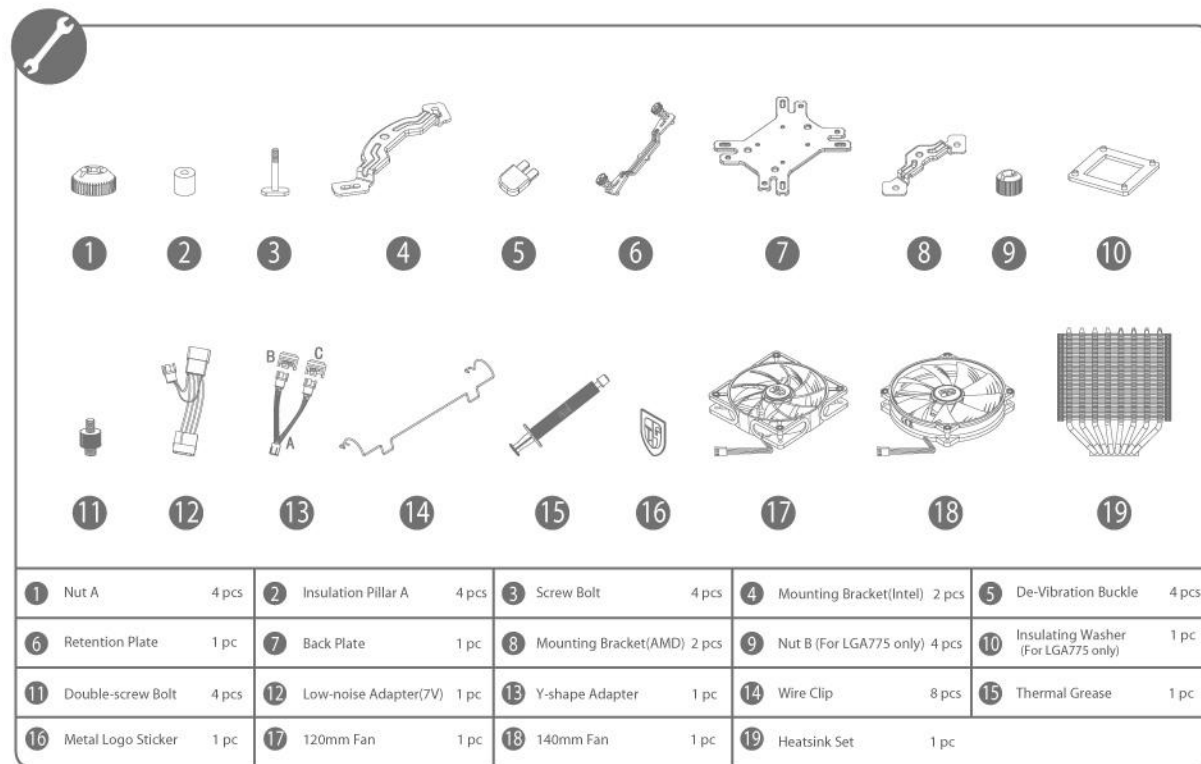




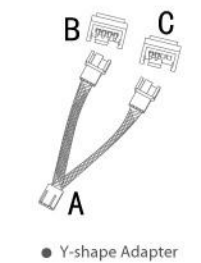
ASSASSIN

User manual



Note for 2 Adapters:

Low-noise Adapter(7V)
Connect the small 4-pin male connector to the fan; Connect the big 4-pin connector to PSU; Input Voltage will be fixed at 7V and fan will run at corresponding speed with low noise.

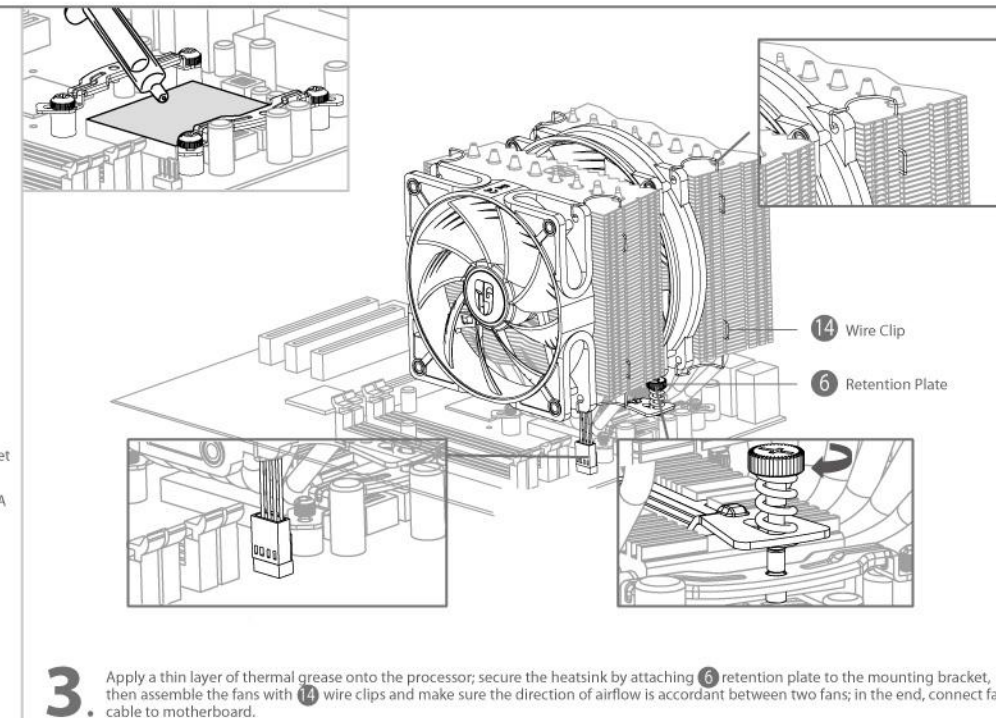
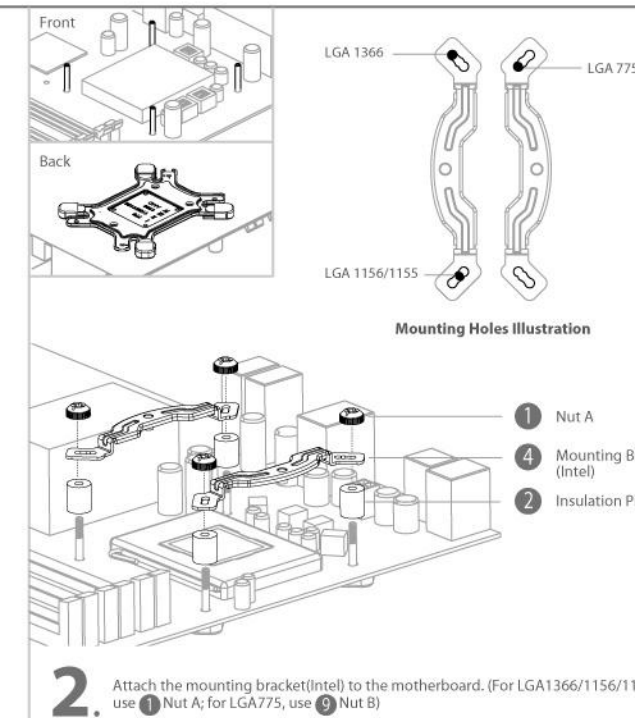
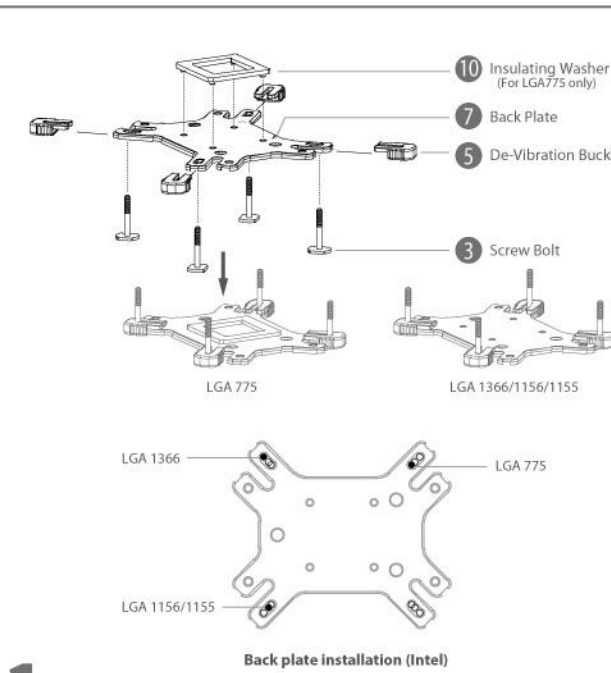


Y-shape Adapter
Connect 2 PWM fans to B&C connector and A to the motherboard. Both fans are PWM controlled but only Fan B's speed signal can be detected.



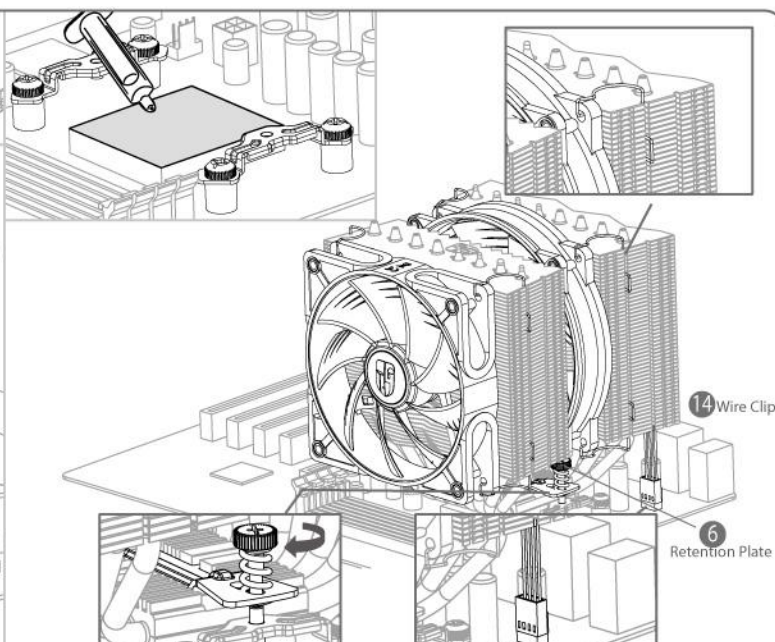
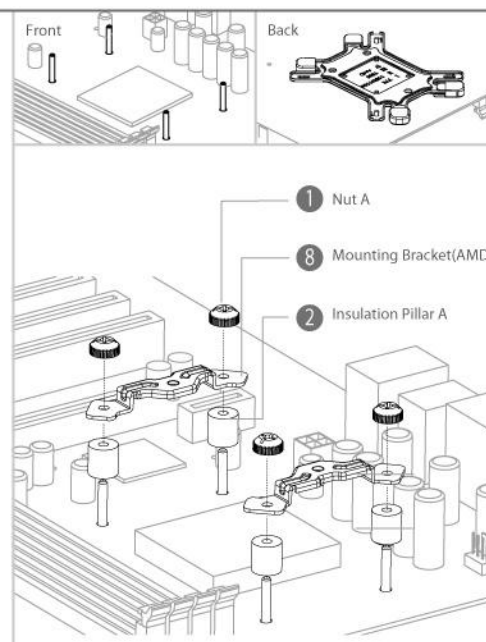
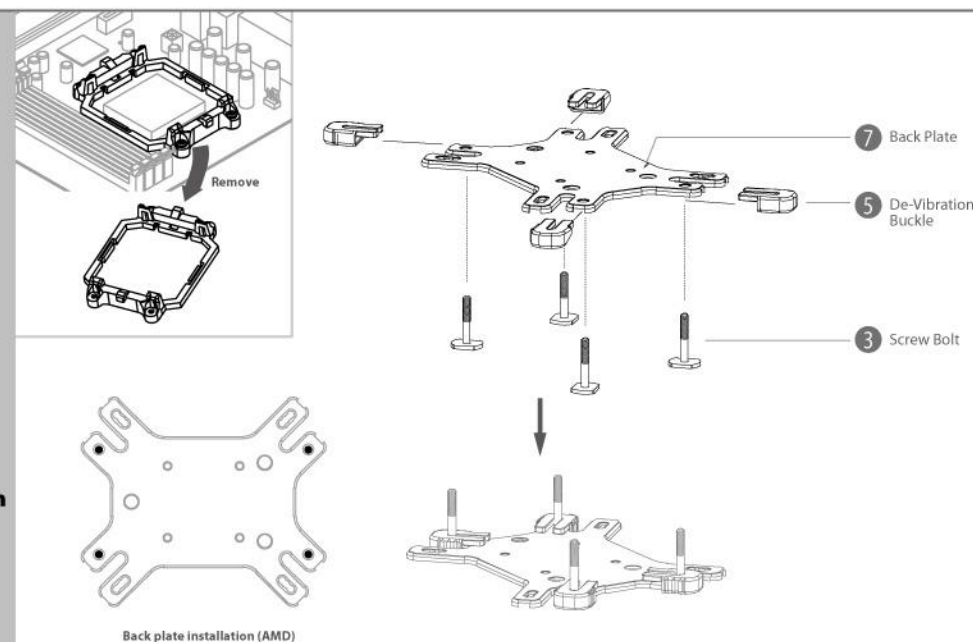
INTEL

LGA1366 LGA1156 LGA1155 LGA775 Installation



AMD

FM1 AM3+ AM3 AM2+ AM2 Installation



INTEL

LGA2011 Installation

