



GABRIEL

User manual

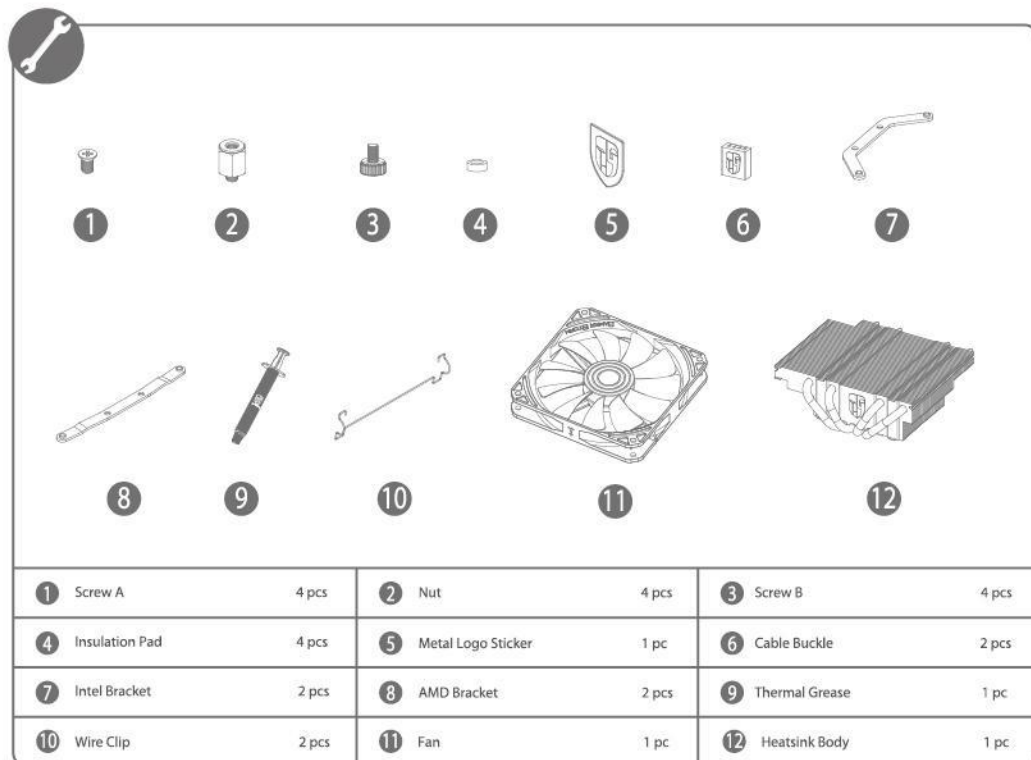
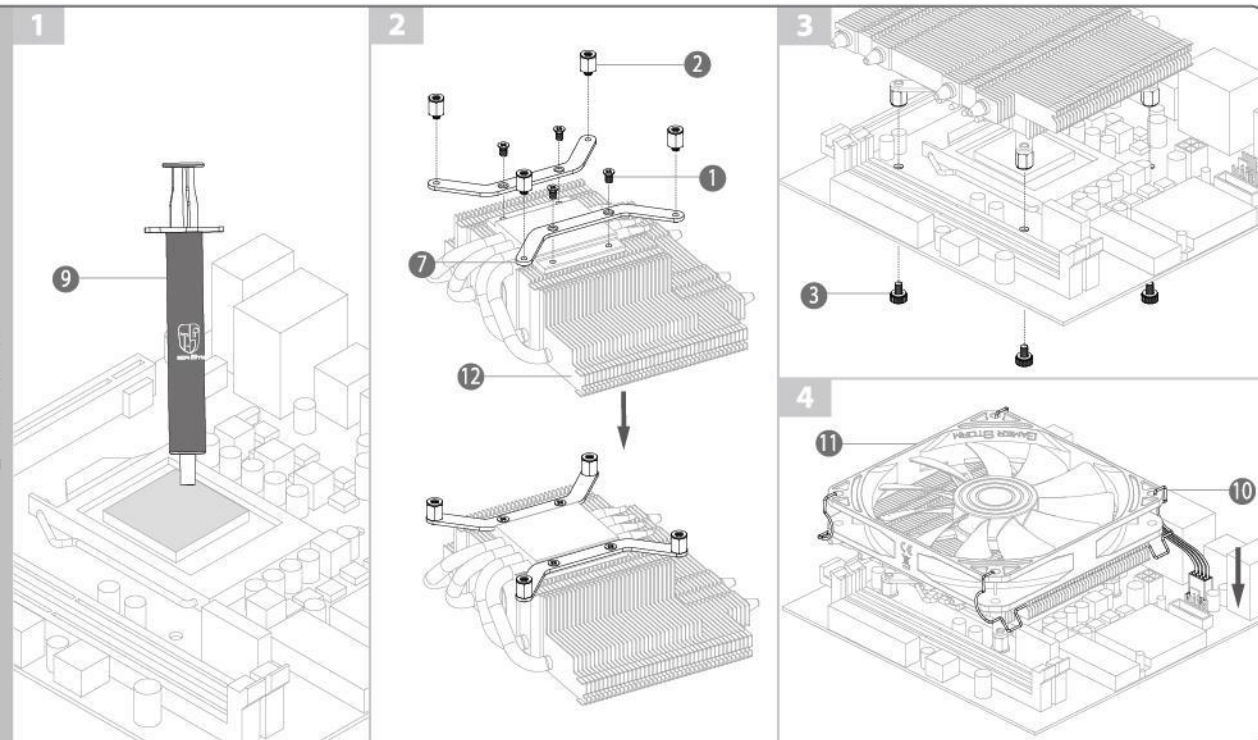
www.gamerstorm.cn

Tips:

Some HTPC/Mini-ITX/M-ATX cases may have very little space between the fan and the case panel. If so, you can set the fan as pull configuration to suck air from the heatsink in order to get the best cooling performance.



INTEL LGA1156 LGA1155 LGA1150 Installation



1	Screw A	4 pcs	2	Nut	4 pcs	3	Screw B	4 pcs
4	Insulation Pad	4 pcs	5	Metal Logo Sticker	1 pc	6	Cable Buckle	2 pcs
7	Intel Bracket	2 pcs	8	AMD Bracket	2 pcs	9	Thermal Grease	1 pc
10	Wire Clip	2 pcs	11	Fan	1 pc	12	Heatsink Body	1 pc

AMD FM2 FM1 AM3+ AM3 AM2+ AM2 940 939 754 Installation

