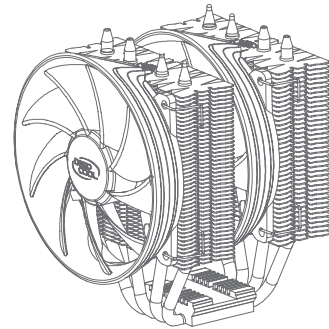




INSTALLATION GUIDE

This installation guide is applicable for FROSTWIN Series.

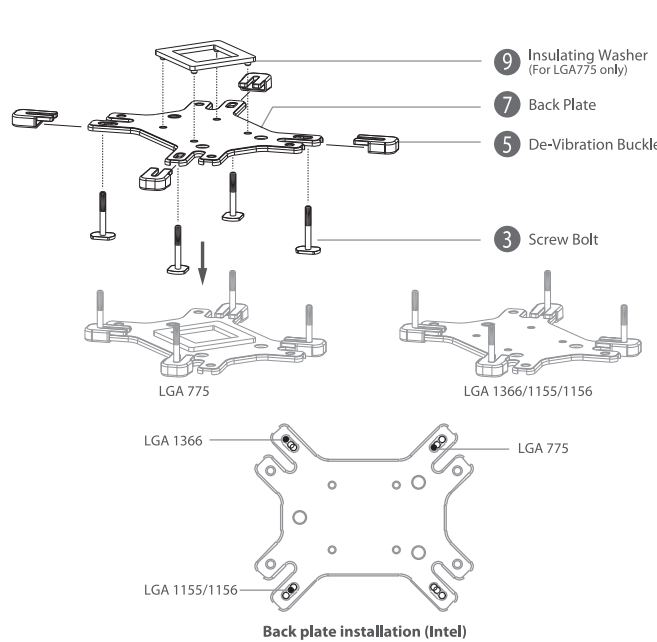


FROSTWIN

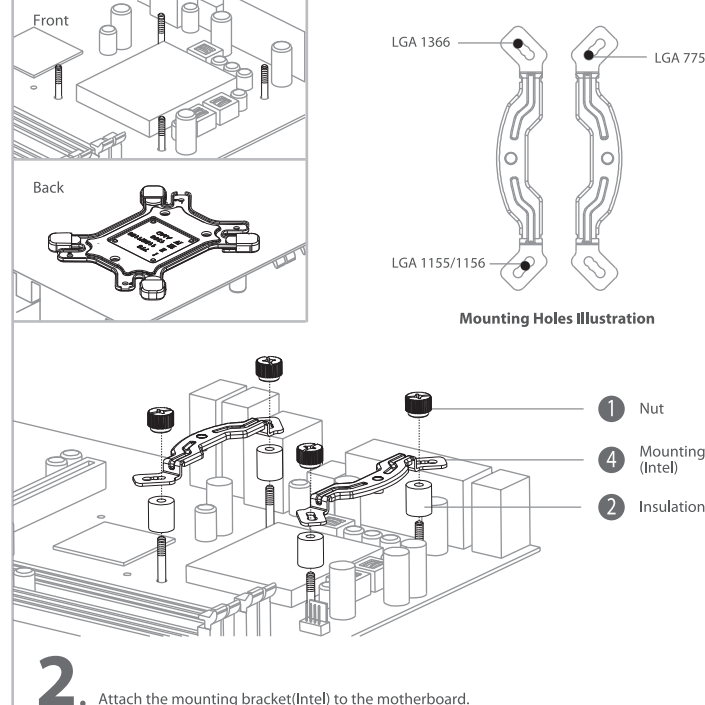
PRODUCT SCHEMATIC DRAWING

1 Nut	4 pcs	2 Insulation Pillar A	4 pcs	3 Screw Bolt	4 pcs	4 Mounting Bracket(Intel)	2 pcs	5 De-Vibration Buckle	4 pcs
6 Retention Plate	1 pc	7 Back Plate	1 pc	8 Mounting Bracket(AMD)	2 pcs	9 Insulating Washer (For LGA775 only)	1 pc	10 Double-screw Bolt	4 pcs
11 Thermal Grease	1 pc	12 Heatsink Set	1 pc						

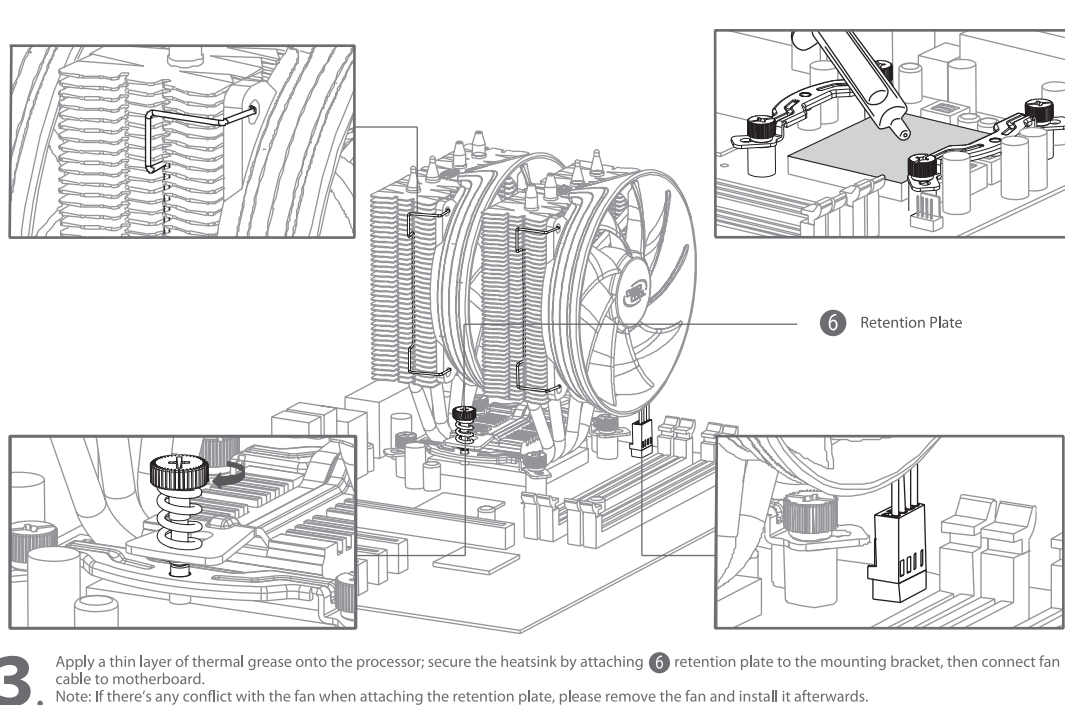
INTEL LGA1366 LGA1155 LGA1156 LGA775 Installation



1. Assemble corresponding parts to the back plate according to the illustration above.



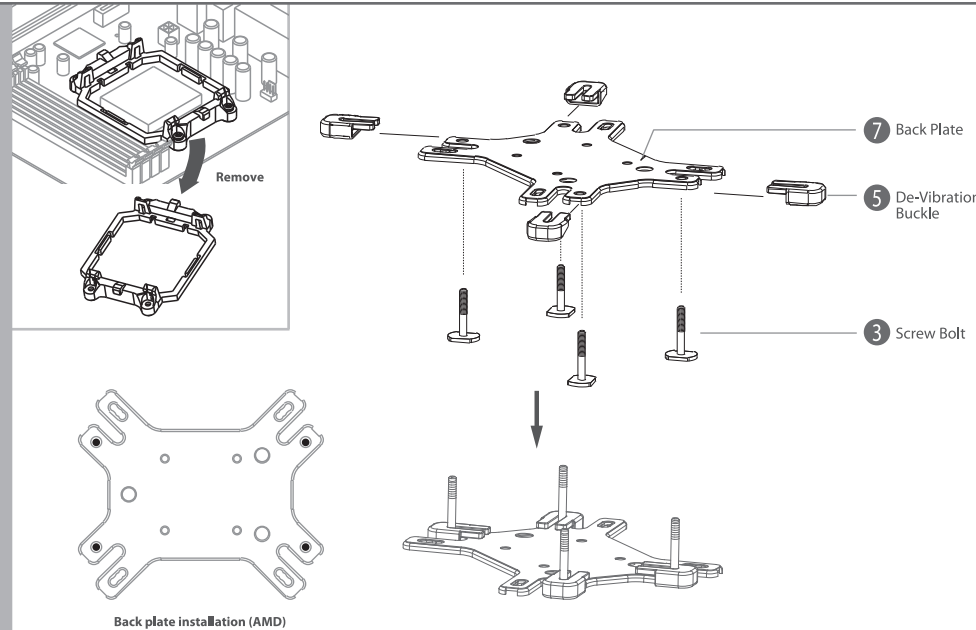
2. Attach the mounting bracket(Intel) to the motherboard.



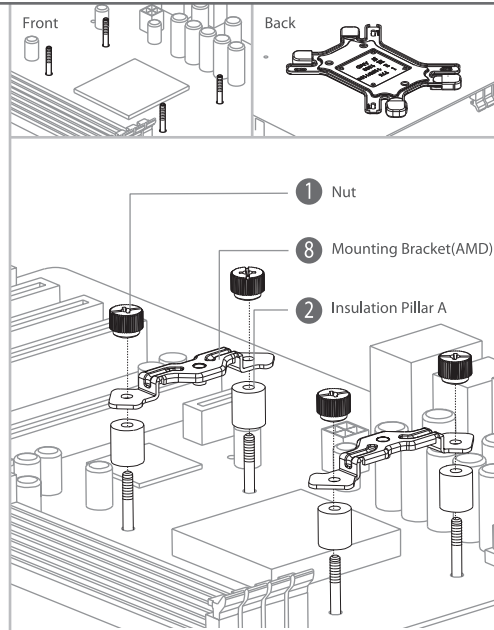
3. Apply a thin layer of thermal grease onto the processor; secure the heatsink by attaching 6 retention plate to the mounting bracket, then connect fan cable to motherboard.
Note: If there's any conflict with the fan when attaching the retention plate, please remove the fan and install it afterwards.



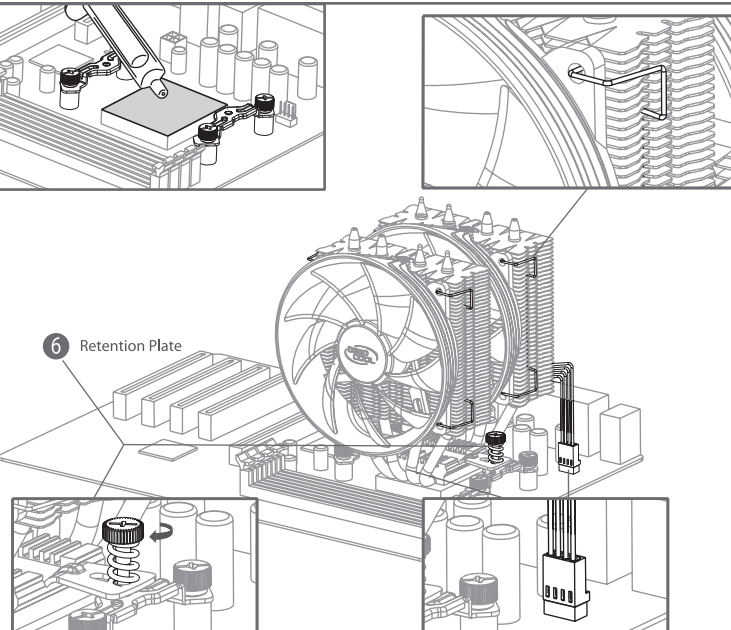
AMD FM1 AM3+ AM3 AM2+ AM2 Installation



1. Assemble corresponding parts to the back plate according to the illustration above.



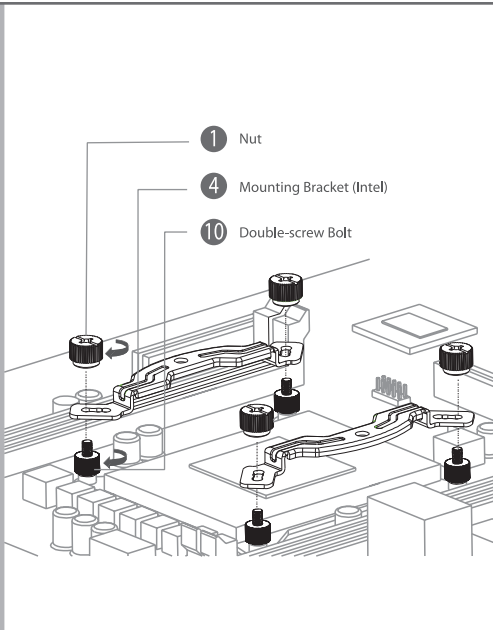
2. Attach the mounting bracket(AMD) to the motherboard.



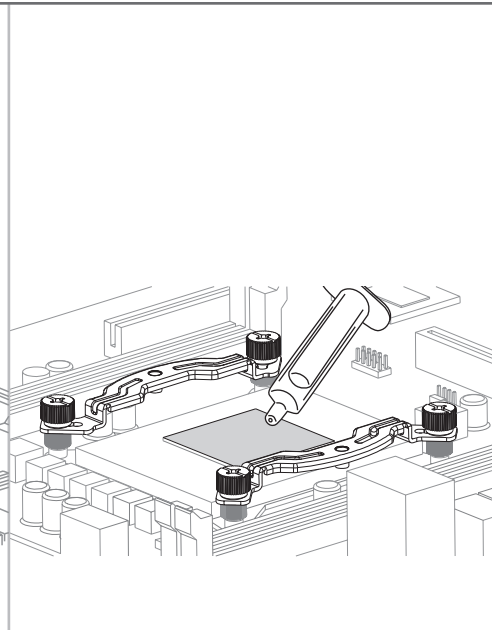
3. Apply a thin layer of thermal grease onto the processor; secure the heatsink by attaching 6 retention plate to the mounting bracket, then connect fan cable to motherboard.
Note: If there's any conflict with the fan when attaching the retention plate, please remove the fan and install it afterwards.



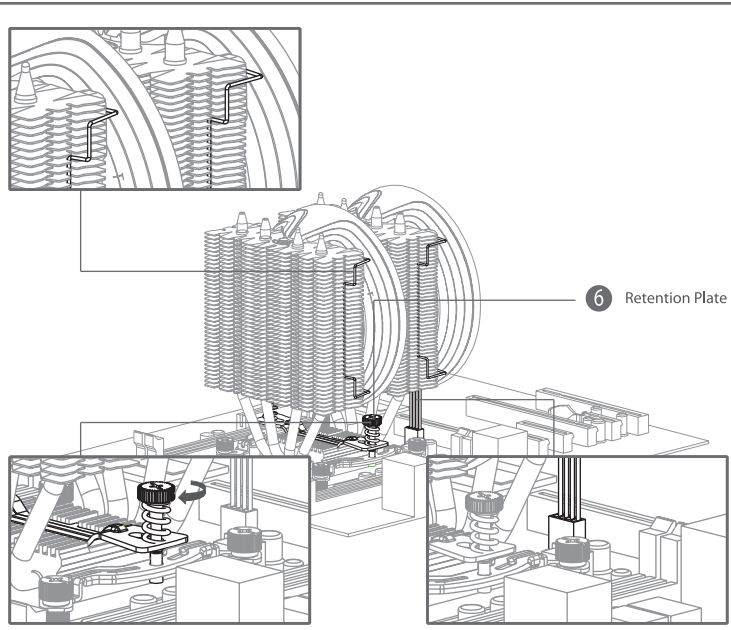
INTEL LGA2011 Installation



1. Attach the mounting bracket(Intel) to the motherboard.



2. Apply a thin layer of thermal grease onto the processor.



3. Secure the heatsink by attaching 6 retention plate to the mounting bracket, then connect fan cable to motherboard.
Note: If there's any conflict with the fan when attaching the retention plate, please remove the fan and install it afterwards.